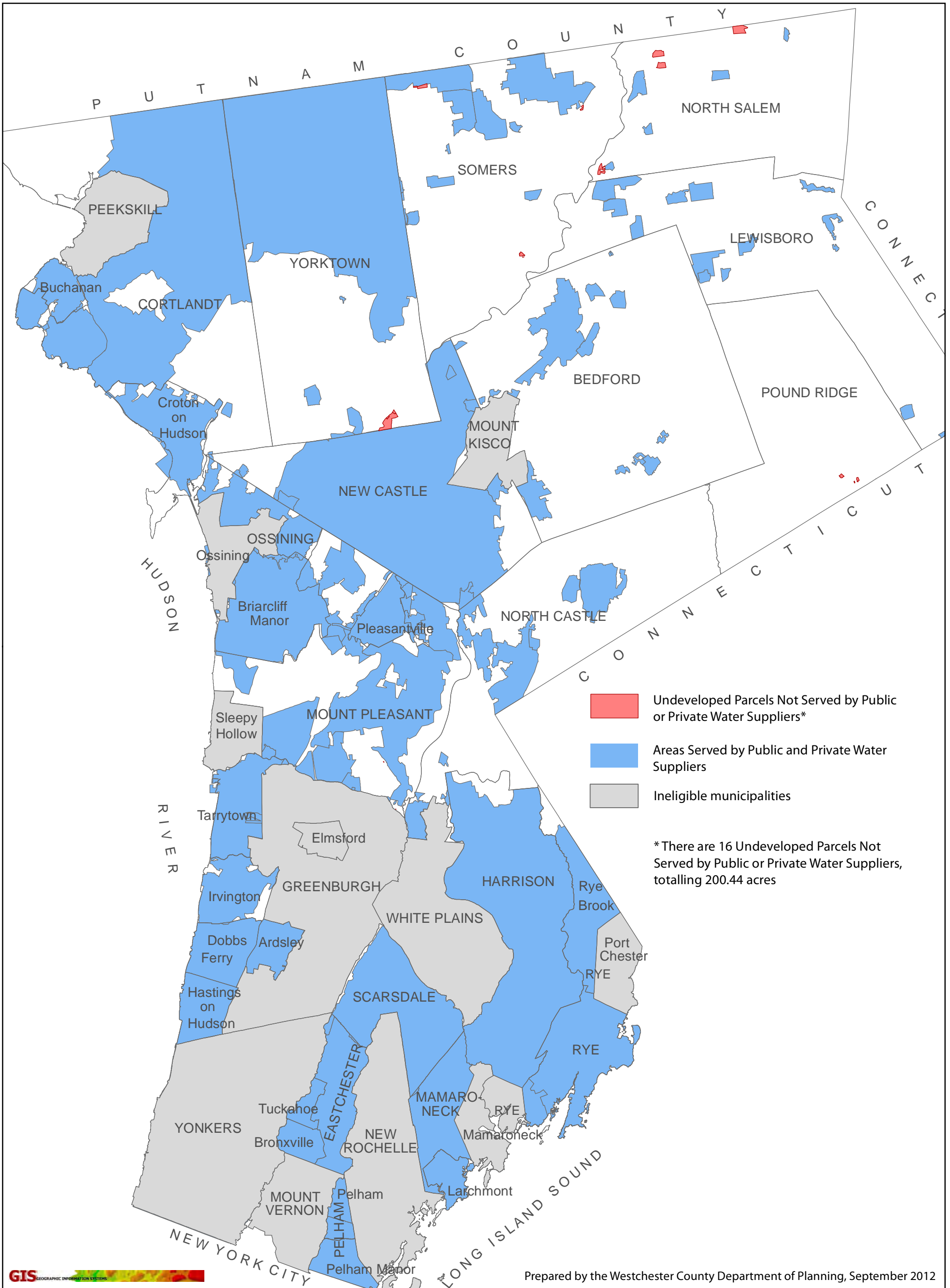


Appendix 39

WESTCHESTER COUNTY, NEW YORK



GIS GEOGRAPHIC INFORMATION SYSTEMS

Prepared by the Westchester County Department of Planning, September 2012

Methodology III-A-1 (1)

Undeveloped Parcels Outside of Areas Served by Public and Private Water Suppliers

Westchester.gov.com

148 Martine Avenue
Room 432
White Plains, NY 10601

www.westchestergov.com/planning